



Douro Street, London, E3

BUTLER & STAG



Price Guide - £875,000 to £925,000
Set within one of East London's historic conservation areas - this beautifully presented three-storey, three-bedroom Neo-Victorian house, boasts 1048 Sq/Ft of internal living space, a south-facing garden and an additional private terrace, situated on the sought-after cobbled street that is Douro Street in Bow.



Freehold

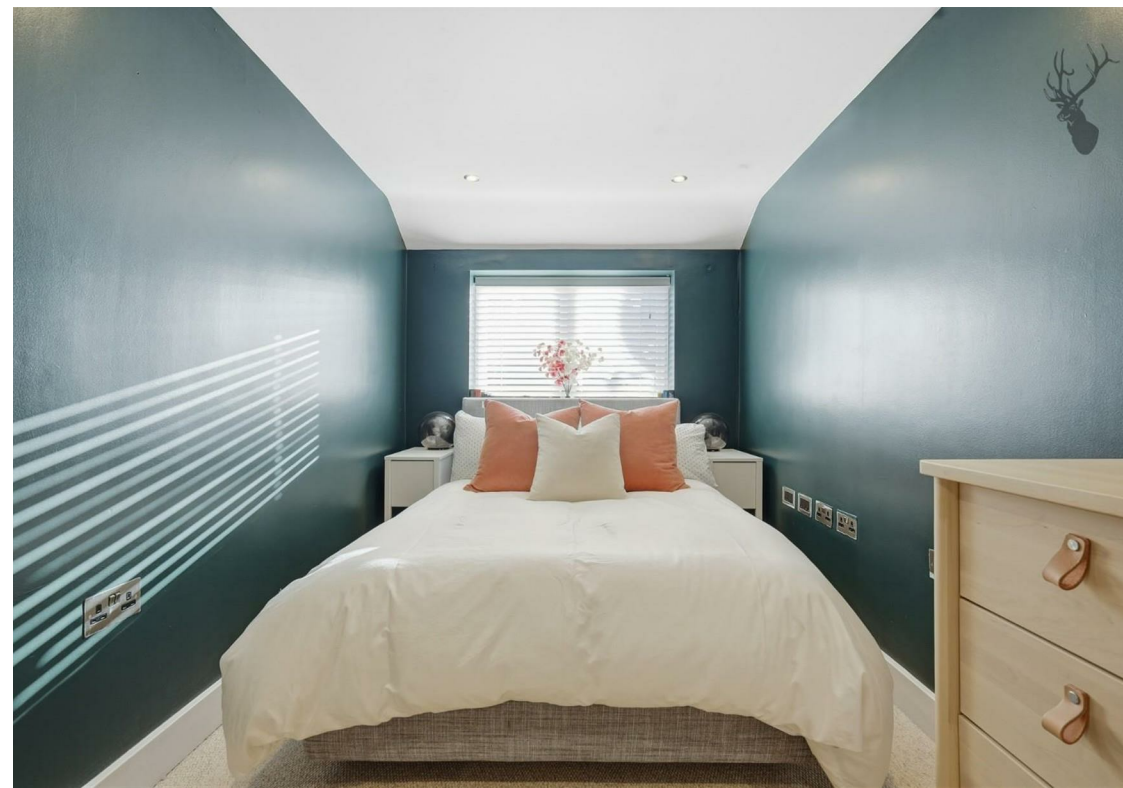
- Three Storey House (Freehold)
- South Facing Landscaped Garden
- Down Stairs Cloakroom
- Sleek Design Kitchen With Quartz Work Surfaces / Open Plan Concept Living Space
- Three Bedrooms
- Private Terrace
- Chain Free
- Engineered Oak Flooring

The property offers well-balanced accommodation arranged over three floors, with a bright and spacious ground floor featuring an open-plan living, dining, and kitchen area that creates an excellent sense of flow and is ideal for modern living. French doors provide an abundance of natural light and offer direct access to the south-facing garden.

The first floor comprises two well-proportioned bedrooms and a contemporary family bathroom, while the top floor is dedicated to the principal bedroom, which benefits from its own private terrace.

Douro Street is a charming, tree-lined no-through road, conveniently located for Victoria Park, Westfield Shopping Centre, and a range of transport links including Hackney Wick (London Overground), Bow Road (District and Hammersmith & City lines), Bow Church (DLR), and Mile End (Central line).

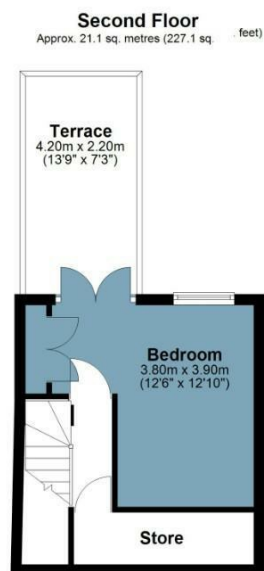
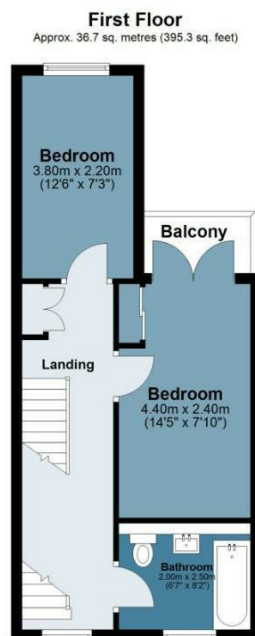
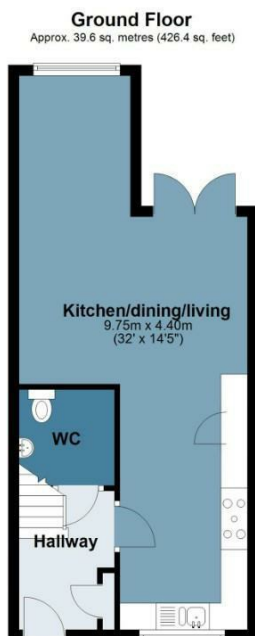




Douro Street

Approx. Gross Internal Area 97.4 Sq M (1048.8 Sq Ft)

BUTLER & STAG



Measurements are approximate and for illustration purposes only. While we do not doubt the accuracy and completeness, we advise you conduct a careful independent assessment of the property to determine monetary value.
© @modephoto.uk www.modephoto.co.uk

IMPORTANT NOTICE - These particulars have been prepared in good faith and they are not intended to constitute part of an offer or contract. We have not performed a structural survey on this property and the services, appliances and specific fittings have not been tested. All photographs, measurements, floor plans and distances referred to are given as a guide and should not be relied upon.

BUTLER & STAG

☎ 020 8102 1236

🏠 508 Roman Road, Bow, London, E3 5LU

✉ bow@butlerandstag.com

www.butlerandstag.uk